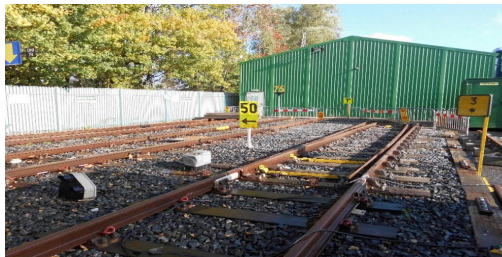


Safety Critical			
Course Title	Course Duration (Days)	Price Per Delegate (+ VAT)	Maximum Delegates Per Course
Personal Track Safety (PTS AC, DCCR) & E-Learning Initial	3	£275.00	12
Personal Track Safety (PTS AC, DCCR) Re-certification	1	£160.00	12
Lookout / Site Warden (LKT) Initial	1	£135.00	8
Lookout / Site Warden (LKT) Re-certification	1	£125.00	8
AOD Points Operator (PO) Initial	1	£150.00	8
AOD Points Operator (PO) Re-certification	1	£150.00	8
Individual Working Alone (IWA) Initial & PTS (AC, DCCR) Re-certification	3	£350.00	8
Individual Working Alone (IWA) & PTS (AC, DCCR) Re-certification	2	£275.00	8
Controller of Site Safety (COSS) Initial with both OLP and CRP LLT modules & PTS (AC, DCCR) Re-certification	6	£550.00	8
Controller of Site Safety (COSS) / PC, with OLP and CRP LLT modules & PTS (AC, DCCR) Re-certification	4	£425.00	8
Controller of Site Safety (COSS), with OLP and CRP LLT modules & PTS (AC, DCCR) Re-certification	4	£350.00	8
Protection Controller (PC) Initial	1	£175.00	8
Engineering Supervisor (ES) Initial <i>(includes SWL2 E-Learning & Til Dawn Lamp Process)</i>	3	£300.00	6
Engineering Supervisor (ES) Recert <i>(includes SWL2 E-Learning & Til Dawn Lamp Process)</i>	2	£200.00	6
OLEC 1 Initial	0.5	£100.00	12
Safe Use of Trolley Equipment	0.5	£100.00	10
Safe Use of Trolley Equipment & Manual Handling	1	£165.00	10
Competent Protection Layer	0.5	£125.00	8
POS Representative <i>(Murphy Only)</i>	0.5	£100.00	12
Til Dawn Lamp Process	0.5	£50.00	12
Industry Common Induction	0.5	£40.00	12
Industry Common Induction - London Underground	0.5	£55.00	12

Other Training			
Course Title	Course Duration (Days)	Price Per Delegate (+ VAT)	Maximum Delegates Per Course
City & Guilds - Manual Handling	1	£65.00	12
City & Guilds - Fire Marshall	1	£65.00	12
NUCO - Emergency First Aid	1	£65.00	12
NUCO - First Aid at Work	3	£275.00	12
NUCO - First Aid at Work Renewal	2	£200.00	12



For further information on Training Courses or Assessments, please do not hesitate to contact us on:
 Tel: 01942 402 958 Email: carolmassingham@murphygroup.co.uk